

APELEM

PRESENTS

ONYX

ULTRA MOBILE
& SMART,
ACCURATE
DIAGNOSIS
ANYWHERE



REDEFINED MOBILITY

BETTER ACCESS TO CARE

- **Fits tightest spaces** for enhanced patient accessibility
- **Slim design** for unobstructed views
- **Versatile tilting and rotating touchscreen** for immediate image review

EFFORTLESS POSITIONING

SWIFT EXECUTION WITH PRECISION

- **Zero-gravity head** allow for smooth adjustments reducing strain
- **Single-grip movement** for quick and accurate positioning

ALWAYS READY

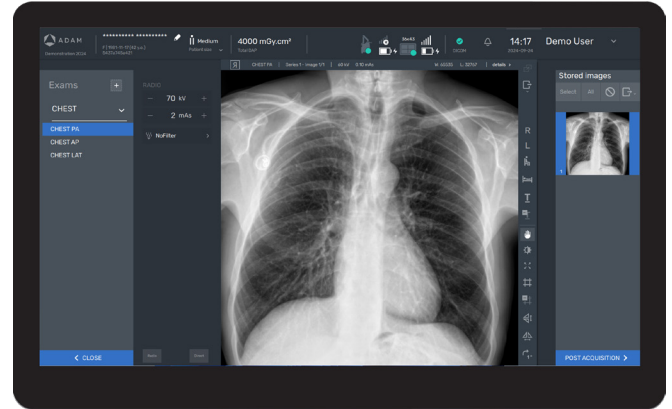
CONTINUOUS PATIENT CARE

- Advanced **X-Tech Cell® battery technology** ensures all-day operation
- **Rapid charge**, two times faster than competition, minimizes downtime

POWERED BY INTELLIGENCE

UNCOMPROMISING EXCELLENCE IN IMAGE QUALITY

- **Intuitive navigation and automated features** simplifies operation allowing for quicker diagnosis
- **A.I.* powered image processing** ensures excellent image quality, for reliable diagnosis
- **Digital grid** image processing enhances image rendering as well as radiographers and patients comfort



SUSTAINABLE INVESTMENT

RELIABLE LONG-TERM PERFORMANCE

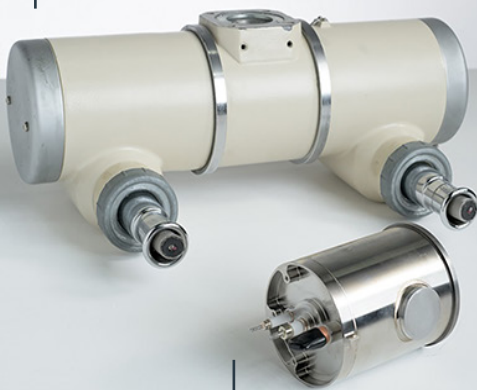
- **Outstanding expected lifespan** of the CNT tube and the X-Tech Cell® battery
- **Cost-effective solution**, reducing the need for replacements and maintenance

CARBON NANOTUBE INNOVATION, SETTING A NEW STANDARD IN MOBILE X-RAY

The **miniaturization of X-ray source** with state-of-the-art carbon nanotubes (CNT) technology allows superior maneuverability and precision with excellent image quality, for enhanced patient outcomes.

TRADITIONNAL TUBE

Thermionic



CNT TUBE

Electronic



COMPACT & LIGHT

Weighs only 2.35 kg compared to traditional 15 kg tubes



RELIABLE

Robust with outstanding expected lifespan



LOW DOSE

Instant pulse with precise electron generation



EFFICIENT

Low consumption

ONYX: INNOVATION MADE IN FRANCE

** The AI software module was developed using pre-trained neural network model developed using deep learning techniques on a large clinical dataset, enabling the device to generate optimized image processing outputs.*